



Grove Farm, Portway,
Hereford HR4 8NF

£1,850 Per Calendar Month

TO LET

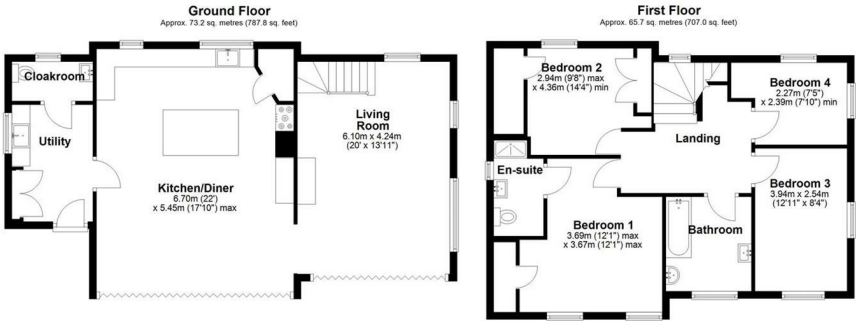
BB

PROPERTY SUMMARY

A stunning detached house situated a couple of miles North of the city with unspoilt views across the countryside. This spacious property comprises a utility, cloakroom, impressive kitchen/diner with modern fitted kitchen including electric Range cooker, bifold double glazed doors, a large living room with woodburner and bifold doors, master ensuite bedroom, a second double bedroom, a third smaller double bedroom, single bedroom, family bathroom, double glazed throughout, oil central heating, lawned area to the front, large driveway with ample parking and storage is available by separate negotiation

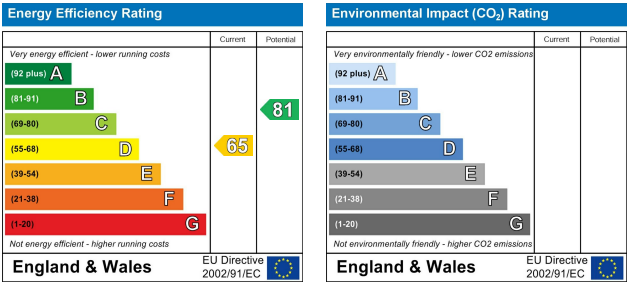
NOTES & COMMENTS

DIRECTIONS



Total area: approx. 138.9 sq. metres (1494.8 sq. feet)

FEES



Brookes Bliss

These particulars are offered on the understanding that all negotiations are conducted through this company. Neither these particulars, nor oral representations, form part of any offer or contract, and their accuracy cannot be guaranteed.

46 Bridge Street, Hereford, Herefordshire HR4 9DG
Tel: 01432 343800
Lettings@brookes.bliss.co.uk

brookesbliss.co.uk

